



 
Departures



DUO-GARD
TOGETHER BY DESIGN

SLEEKLINE
MONOLITHIC CANOPY SYSTEM



DUO-GARD'S SLEEKLINE

Offers various levels of visibility, light diffusion and color creating infinite design possibility. Combining high performance technology and modern aesthetic, Duo-Gard's award winning canopy system is the perfect fit for any design.

- Panels run continuous for end to end without mullions or glazing channels for visual continuity
- Our water flow system does not have an end channel and allows for a ½:12 pitch
- This system is fully tested and can be designed to withstand any loading requirements
- Polycarbonate will not shatter and has 250 times the impact strength of glass, creating a safer environment and lower maintenance cost
- Sleekline maintains a sleek leading edge detail without raised battens
- Structural span options provide design flexibility



MONOLITHIC CANOPY SYSTEM

SERVICES

- Design and fabricate canopy structure from the ground up in both steel and aluminum
- Sealed drawings in all 50 states
- Detailed shopped drawings for your approval
- Accommodations for signage and lighting
- Duo-Gard's cross-functional design team works with your team, saving you time and money

DESIGN

- Panels are 2' wide
- All aluminum finishes are available
- 3 Panel thicknesses | 1/4" | 3/8" | 1/2"
- Multiple base channel options for greater spans
- Single panel lengths up to



“A light and airy portal absent of symmetry, creating an unexpected but bold ... “Welcome” to the first moment of arrival.”

- Hampton's exterior renovation initiative

FUSION

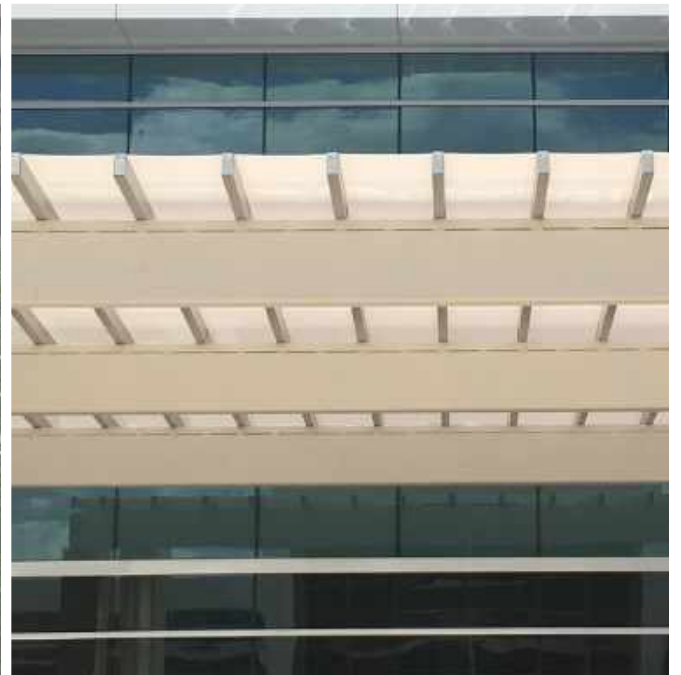
DUO-GARD | 3FORM

97 COLORS | 3 FINISHES | 3 THICKNESSES

FR27	FR18	FO17	FY19	FG63	FG51	FB20	FB43	FR34
FR28	FV22	FO08	FY22	FG31	FG58	FB19	FB47	FV15
FR26	FV23	FO16	FY13	FG24	FG52	FB21	FB48	FV16
FR24	FV24	FY20	FG25	FG43	FG53	FB23	FB46	FV17
FR25	FV25	FY15	FG26	FG44	FG54	FB24	FB39	FV18
FR19	FO07	FY17	FG27	FG53	FG55	FB26	FB42	FV19
FR23	FO14	FY16	FG28	FG41	FG57	FB15	FV08	FV12
FR22	FO15	FY14	FG32	FG40	FB13	FB59	FV09	FR39

FN28	FN31	FN32	FR13	FR12	FR34	FN48	FN47	FW03
FO19	FN14	FY08	FY10	FN15	FN17	FN53	FN52	FN51
FN26	FY06	FN58	FN56	FN36	FE02	FN37	FN41	FW02

FINISHES: VAIL, LUSTER, HAZE | 1/4", 3/8", 1/2" THICKNESSES



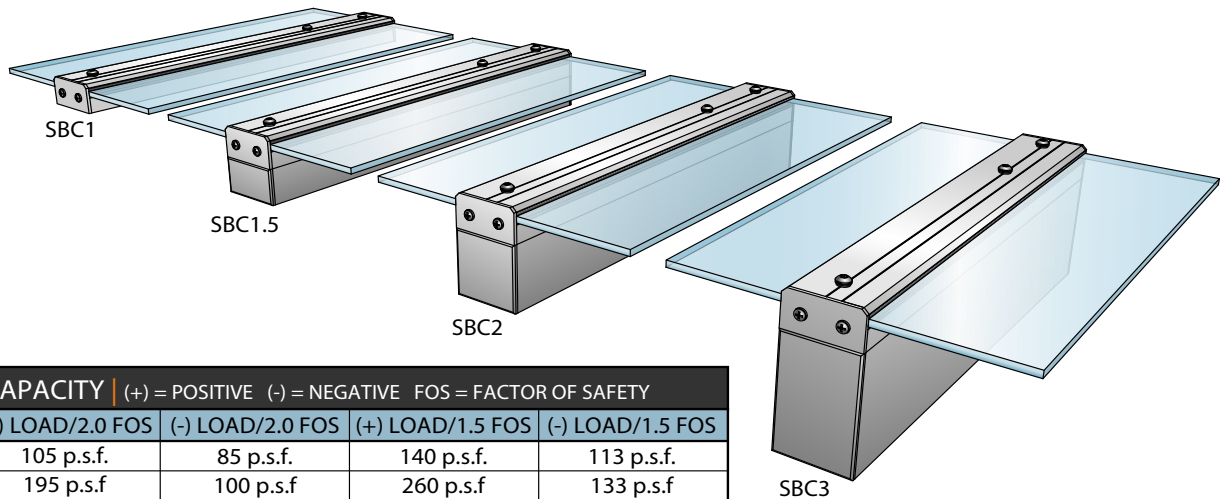
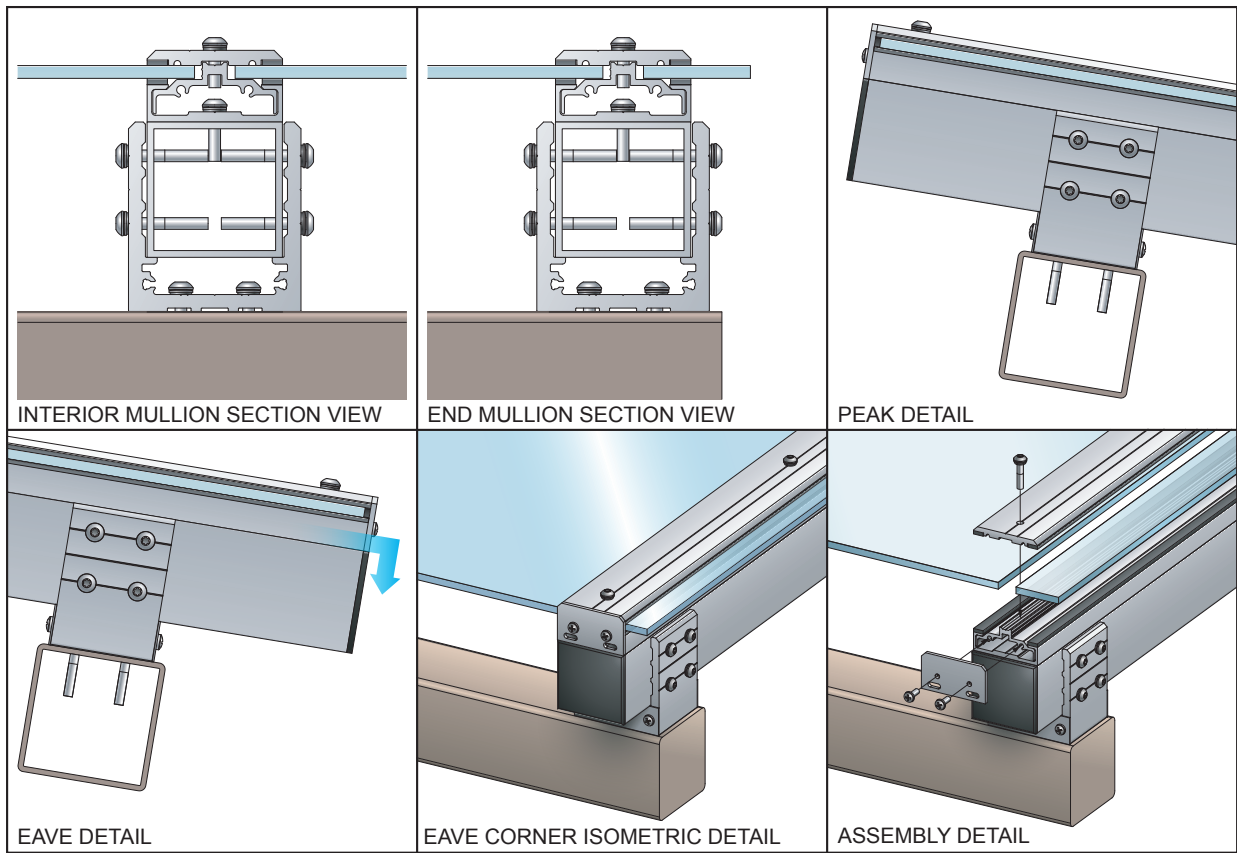
TEST REPORT CERTIFICATION

TEST STANDARD	TEST DESCRIPTION	RESULTS
FLAMMABILITY		
ASTM D1929	IGNITION TEMPERATURE	550°C / 1022°F
ASTM D2843	DENSITY OF SMOKE	57.7%
ASTM D635	BURN EXTENT	CC1
PANEL SYSTEM PERFORMANCE - CONTACT DUO-GARD FOR RESULTS AND QUESTIONS		
ASTM E330	STANDARD TEST METHOD FOR STRUCTURAL PERFORMANCE	
TAS 204-94	STANDARD TEST METHOD FOR STRUCTURAL PERFORMANCE	



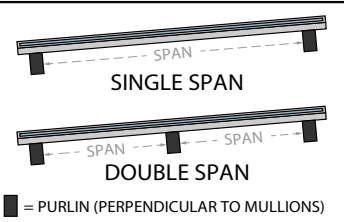
FEATURES	SLEEKLINE	GLASS
Irregular Glazing Shapes	Irregular shapes are easy and affordable	Higher expense and longer lead times
Field Modification	Can be easily modified in the field	Cannot be field cut requires exact measuring, edge work, pattern changes and heat strengthening
Safety	Will not break or shatter under extreme loading conditions	Laminated glass can break and has the potential of falling debris, requiring immediate replacement
Impact Resistance	250 times the impact resistance of standard glass	Is not impact resistant
Available Colors	Over 100 standard colors available	Colors are custom
1/4" Panel Weight	1 PSF	3.5 - 10 PSF
Panel Length	Continuous panel lengths up to 40 feet	Length limitations create the need for more stand-offs and causes deflection issues
Deflection	Can deflect more than 8 times the amount of glass without failure	Small deflection limits require more structure and expense
Sealants	All sealants are dry seal sand do not require maintenance	Requires butt-joints, installation of sealants are weather permitting, expensive and take time to cure
Organic Designs	Panels can be cut and formed to desired configuration without the cost of specialty customization	Expensive to customize
Cost of Installation	Lighter structure and larger panels significantly reduce installation time	Larger field crew and power equipment needed, requires more time to install
Project Cost	Save on shipping, product, installations, maintenance and modifications	Higher cost of shipping, product, installations, maintenance and modifications

STRUCTURAL SPAN OPTIONS

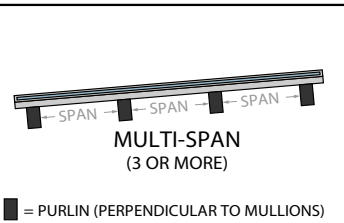


PANEL CAPACITY (+) = POSITIVE (-) = NEGATIVE FOS = FACTOR OF SAFETY				
PANEL	(+) LOAD/2.0 FOS	(-) LOAD/2.0 FOS	(+) LOAD/1.5 FOS	(-) LOAD/1.5 FOS
1/4"	105 p.s.f.	85 p.s.f.	140 p.s.f.	113 p.s.f.
3/8"	195 p.s.f.	100 p.s.f.	260 p.s.f.	133 p.s.f.

SLEEKLINE MAXIMUM PURLIN SPACING* SINGLE & DOUBLE SPAN															
REVISED 1/16/18		DESIGN PRESSURE ON SYSTEM (p.s.f.)													
		10	20	30	40	50	60	70	80	90	100	120	140	160	180
MULLION	SBC1	42"	36"	30"	24"	24"	24"								
	SBC1.5	108"	84"	72"	66"	60"	60"	54"	54"	48"	48"	48"	42"	42"	36"
	SBC2	150"	126"	108"	102"	90"	84"	84"	78"	78"	72"	66"	66"	60"	60"
	SBC3	192"	168"	150"	144"	132"	126"	120"	114"	114"	108"	102"	96"	90"	90"

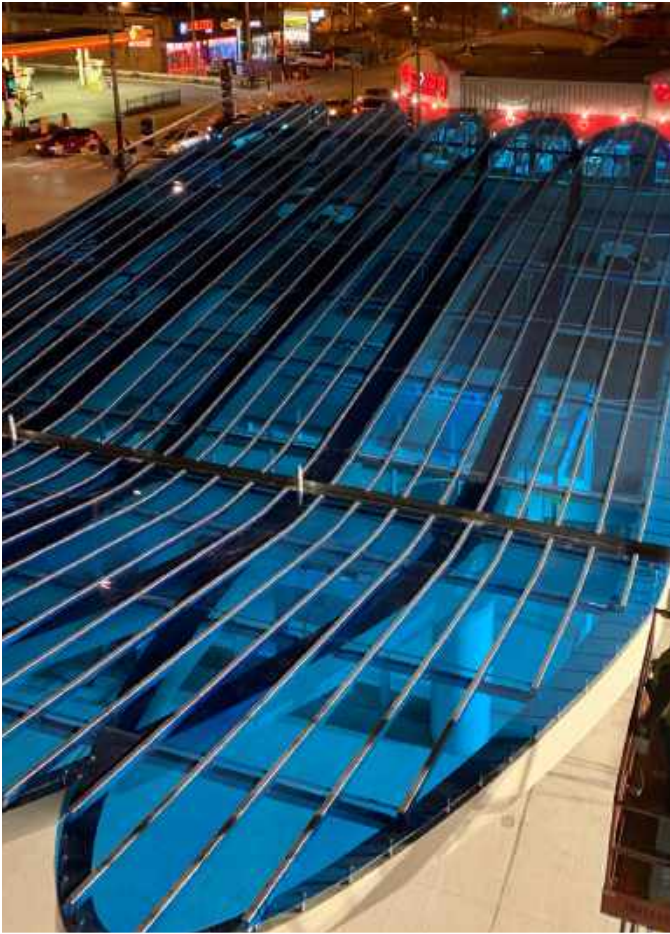


SLEEKLINE MAXIMUM PURLIN SPACING* MULTI-SPAN (3 OR MORE)															
REVISED 1/16/18		DESIGN PRESSURE ON SYSTEM (p.s.f.)													
		10	20	30	40	50	60	70	80	90	100	120	140	160	180
MULLION	SBC1	54"	42"	36"	36"	30"	30"	24"	24"	24"					
	SBC1.5	132"	108"	90"	84"	78"	72"	72"	66"	66"	60"	60"	54"	54"	48"
	SBC2	174"	150"	138"	126"	120"	108"	108"	102"	96"	90"	84"	78"	72"	72"
	SBC3	234"	198"	180"	168"	162"	150"	144"	138"	138"	132"	126"	114"	108"	102"



NOTES: ALL SPACING DIMENSIONS LISTED IN TABLES ABOVE ARE "ON CENTER" DIMENSIONS. PANEL CAPACITIES ARE CONFIRMED BY ACCREDITED THIRD PARTY TEST AGENCY REPORTS.

*CHARTS ARE FOR REFERENCE ONLY.



LIMITLESS DESIGN

Duo-Gard's diverse polycarbonate systems create design flexibility. We engineer our systems to adapt to various curves and irregular shapes. Our single panel design is easily field modified or can be fabricated to fit the structure.



FEATURES

- BIM/REVIT
- Anodized, Kynar and Tenemec finishes
- Fabrication in steel or aluminum

STRUCTURE BY DUO-GARD

Aluminum is the industry standard; Duo-Gard is well equipped to deliver. However, larger projects and heavier load conditions demand a robust structure. Enter, steel.

Duo-Gard keeps our steel yard and fabrication shop ready to take on any project in any environment. We not only design and fabricate, but also engineer custom solutions for each project. We provide complete turn-key steel or aluminum packages while collaborating with you every step of the way. We know that budgets can often dictate a design. To mitigate that, we offer in house engineering, a stocked steel and aluminum yard, fabrication, and installation. This helps keep cost down and keeps your design in the forefront.

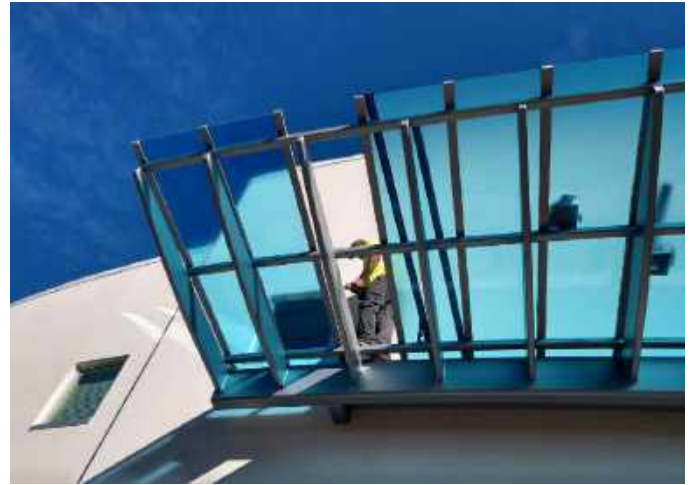
Our process begins in the Engineering Department. We calculate site specific loading conditions that carry through to sizing structural steel and aluminum, connection details, and hardware, while keeping the budget in mind. Duo-Gard offers stamped calculations and drawing packages to meet the demands of an ever-changing environment to help you through the submittal process.

From high winds to heavy snow loads, nothing stops Duo-Gard from forging ahead to deliver safe, efficient, and bespoke solutions for your project.



TURNKEY SOLUTIONS

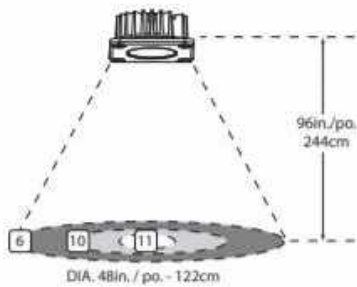
- Design services ensure code compliance and material optimization
- Estimates and budget pricing
- Drawings and specifications
- Ground up structural engineering and fabrication in steel and aluminum
- Glazing system engineering and fabrication
- Installation services
- Installation training and supervision



LIGHTING

Duo-Gard's LED Lighting Package integrates seamlessly into the structure to create an illuminated canopy or walkway.

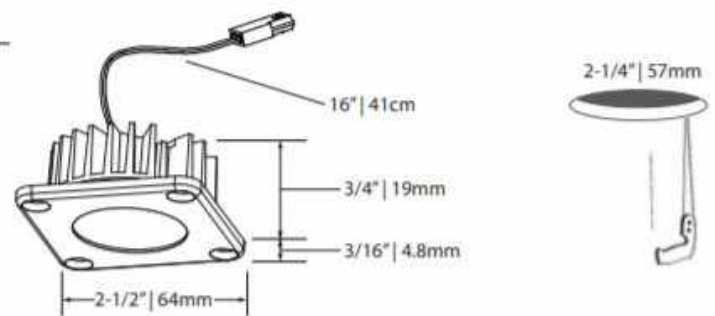
Contact us to discuss your project.

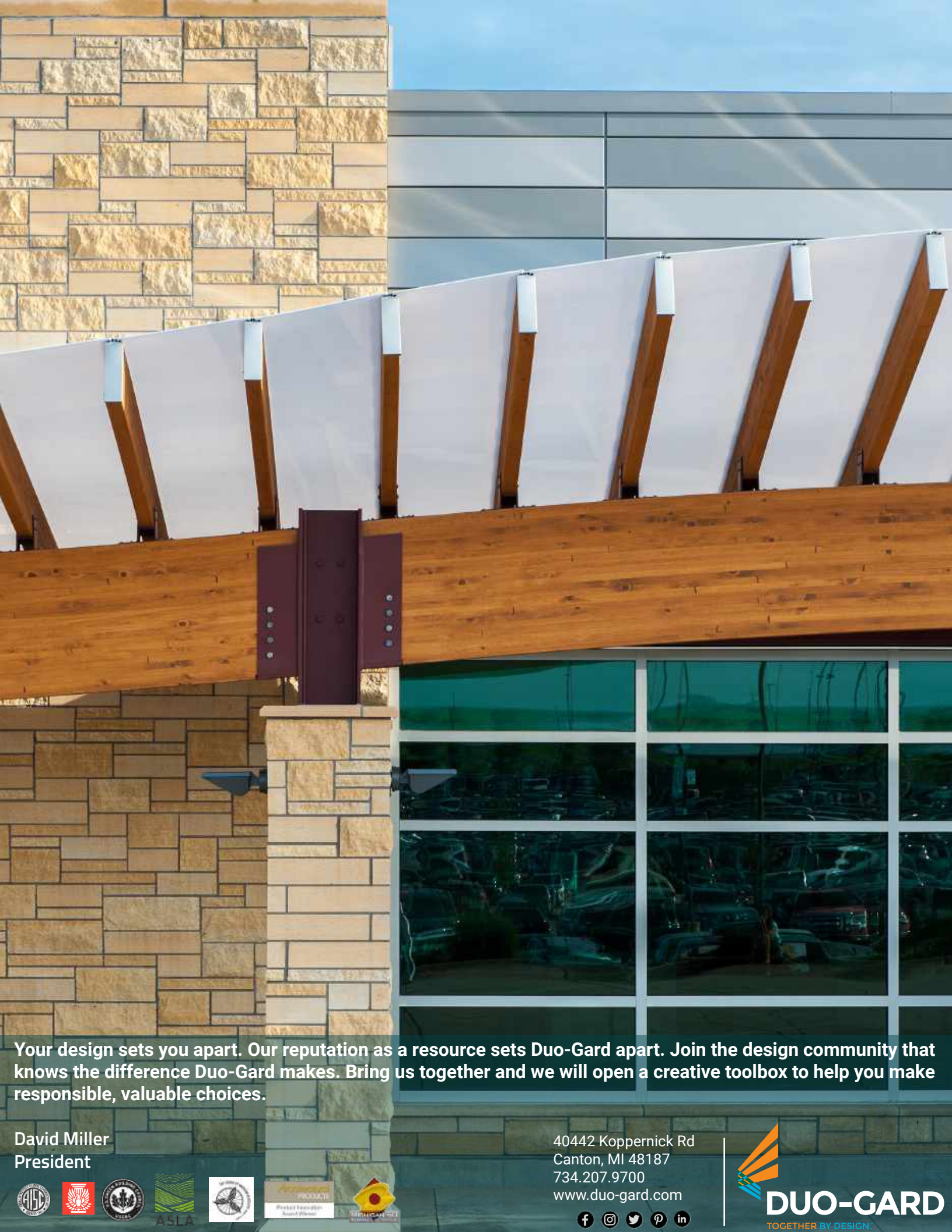


2700K  Warm white	CL  Clear lens	BK  Black
3000K  Soft white	FR  Frosted lens	SL  Silver
4000K  Cool white		WH  White

INSTALLATION

-  Recessed - In any **NON INSULATED** structure
-  Recommended spacing - 48in. (122cm)
-  Orientation - Any direction





Your design sets you apart. Our reputation as a resource sets Duo-Gard apart. Join the design community that knows the difference Duo-Gard makes. Bring us together and we will open a creative toolbox to help you make responsible, valuable choices.

David Miller
President



40442 Koppnick Rd
Canton, MI 48187
734.207.9700
www.duo-gard.com

