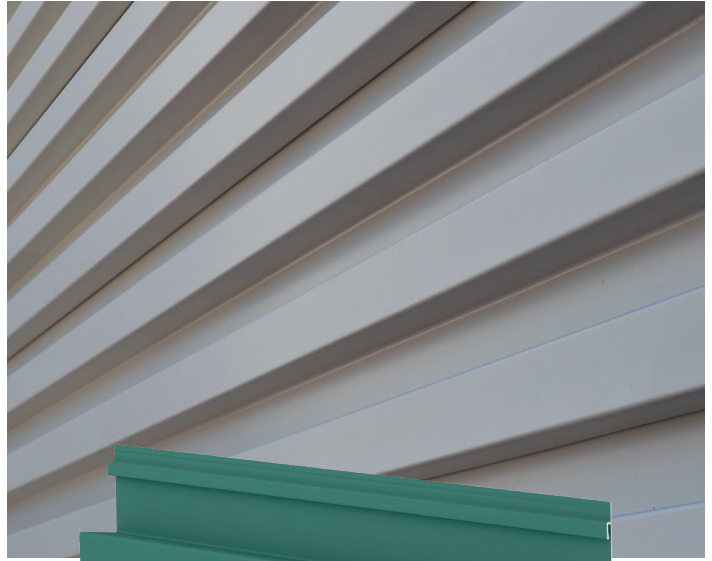
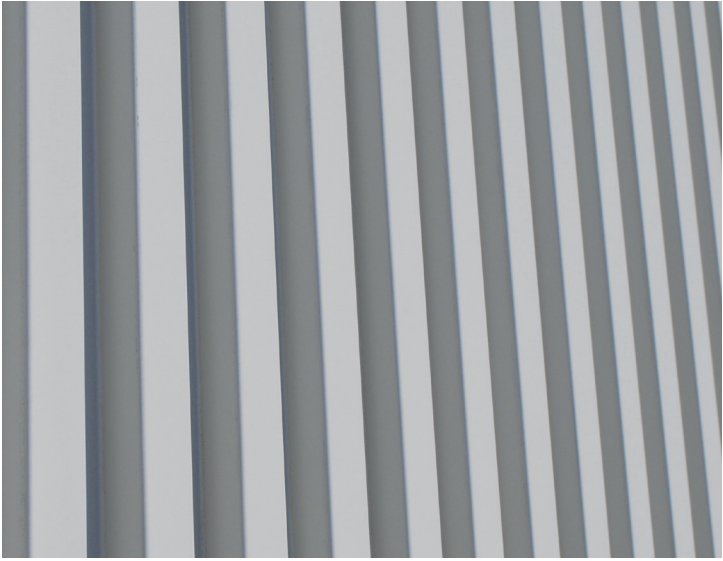
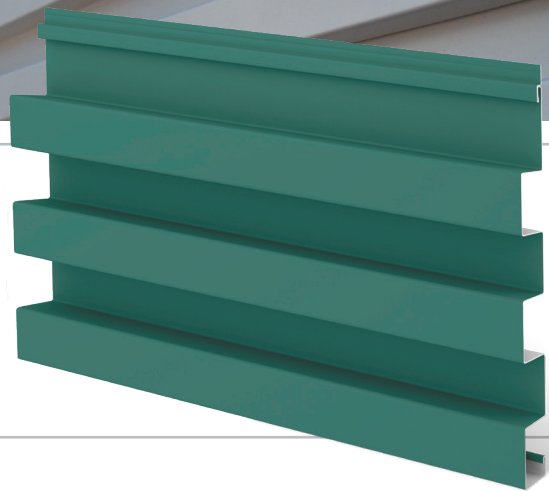


Berridge BR-12 Panel

WALL AND FASCIA PANEL SYSTEM



The Berridge BR-12 Panel is a metal wall panel designed for horizontal and vertical wall applications. This bold concealed fastener panel interlocks with the Berridge HC-16, HR-16, HS-8, and HS-12 wall panels to provide endless design possibilities.



Materials

24 and 22 Gauge Steel
0.032 and 0.040 Aluminum

Specifications

Uses: Wall, Fascia, Screen Wall, Berridge Fencing System

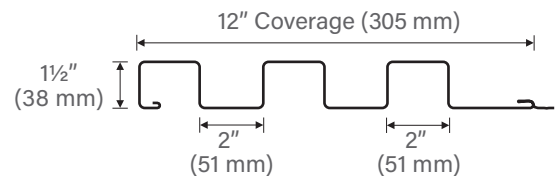
Coverage: 12"

Finishes: Smooth

Fasteners: Concealed

Applications: Vertical on fencing; horizontal or vertical over open framing or solid sheathing

Pattern: 1 1/2" height and 2" rib with 2" reveal



Installation

- Panel is available from the factory in continuous lengths to a maximum of 40'
- Interlocks with HC-16, HR-16, HS-8, and HS-12 panels
- Use siding starter strip to start the panel
- Use channel closure at inside and outside corners with or without rubber closures
- Use standard channel at jambs with rubber closures
- Use special channel at jambs without rubber closures
- BR rubber closures available for enhanced weather resistance



Detail of BR-12 Panel Interlock

BERRIDGE BR-12 PANEL TESTING AND CERTIFICATION SUMMARY CHART

CATEGORY	CHARACTERISTIC	TEST METHOD	PURPOSE	RESULT
PERFORMANCE	■ Uplift Resistance	ASTM E-1592	Test method to determine uplift resistance of open framing systems	See Load Chart on Berridge website
AIR AND MOISTURE	□ Water Penetration	ASTM E-331**	Test method for water penetration of metal roofs by uniform static air pressure difference	No Leakage at 15.0 PSF Pressure Differential
	□ Air Leakage	ASTM E-283**	Test method for rate of air leakage through exterior metal roofs	Less than 0.01 CFM at 6.24 PSF Pressure Differential

■ - Steel only □ - Steel and Aluminum

For further details please visit www.Berridge.com

** See HR-16 Panel for test results on ASTM E-331 and ASTM E-283 with similar panel seams



CORPORATE HEADQUARTERS
 2610 Harry Wurzbach Road
 San Antonio, TX 78209
 (800) 669-0009
www.Berridge.com