

BERRIDGE

MANUFACTURING COMPANY

ARCHITECTURAL METAL ROOF AND WALL SYSTEMS



PRODUCT GUIDE

(800) 669-0009 • WWW.BERRIDGE.COM

BERRIDGE TESTING AND CERTIFICATIONS SUMMARY CHART

■ - Steel only □ - Steel and Aluminum

STANDING SEAM ROOF PANELS	Wind			Fire		Impact	Wind		Wind and Water					Wind	FL PRODUCT APPROVAL	MIAMI DADE	TDI LISTED	ICC-ES Report	CEGS 07416
	UL 580	UL 90	UL 1897	UL 790	UL 263	UL 2218	ASTM E-1592	ASTM E-330	ASTM E-2140	ASTM E-1646	ASTM E-1680	ASTM E-331	ASTM E-283	FM 4471					
Tee-Panel		□		□	■	□				□	□	□	□		■				
High Seam Tee-Panel*		□		□	■	□				□	□	□	□		■				
Tee-Lock Panel	□	□	□	□		□	■			□	□	□	□	■	□		□		
Cee-Lock Panel**	□	□	□	□	■	□	■			■	■	■	■		□	■	□	■	
Zee-Lock Panel (Single Lock)**	■	■	■	□	■	□	■		■	■	■	■	■		■			■	■
Double-Lock Zee-Lock Panel**	□	■	□	□	■	□	■		■	■	■	■	■	■	□	■	□	■	■
OTHER ROOF SYSTEMS	UL 580	UL 90	UL 1897	UL 790	UL 263	UL 2218	ASTM E-1592	ASTM E-330	ASTM E-2140	ASTM E-1646	ASTM E-1680	ASTM E-331	ASTM E-283	FM 4471	FL PRODUCT APPROVAL	MIAMI DADE	TDI LISTED	ICC-ES Report	CEGS 07416
Bermuda Panel		■		■		■									■				
Spanish Tile	■		■	■		■									■		■		
S-Tile	■		■	■		■	■								■	■	■		
Batten Seam Panel		■		■	■	■									■				
Victorian & Classic Shingles	■		■												■	■	■		
Fish Scale Shingle																			
Curved Flat Seam Panel																			
"M" & "R" Panel		■		■		■									■				
Deep-Deck Panel		■		■		■	□			□	□				□		□		
S-Deck Panel				■		■	□								□		□		
Double-Rib Panel		■		■		■									■				
FASCIA, WALL & SOFFIT PANELS	UL 580	UL 90	UL 1897	UL 790	UL 263	UL 2218	ASTM E-1592	ASTM E-330	ASTM E-2140	ASTM E-1646	ASTM E-1680	ASTM E-331	ASTM E-283	FM 4471	FL PRODUCT APPROVAL	MIAMI DADE	TDI LISTED	ICC-ES Report	CEGS 07416
HS Panels***							□					□	□		□		□		
HR-16 Panel							□					□	□		□	■	■		
HC-16 Panel***							□					□	□		□				
BR-12 Panel***							□					□	□						
Vee-Panel																			
FW Panels							□					□	□		□	■	□		
L-Panel							■									■	■		
B-6 Panel								■											
Flush Seam Panel								■					■		■				
Thin-Line Panel								■							■				
Fluted Fascia								■							■				

For actual test results, technical questions, fastener types, fastener spacing or job-specific engineering, please contact the Berridge Technical Department at (800) 669-0009 or technical@berridge.com. Updates and additional testing are added on a continual basis. Consult the Berridge Technical Department for the latest updates.

* 1" tall seam is UL-90 wind uplift approved for both steel and aluminum. 1½" tall seam is UL-90 wind uplift approved for steel only

** Use continuous ribs for ASTM E-1646, ASTM E-1680, ASTM E-331, and ASTM E-283 compliance

*** See HR-16 Panel for test results on ASTM E-331 and ASTM E-283 with similar panel seams

UL 90 - Uplift test of roof system.
UL 1897 - Uplift test of roof system.
UL 790 - Fire test of roof system.

UL 263 - Fire test of construction and materials.
UL 2218 - Impact resistance of prepared roof covering materials.

ASTM E-1592 - Structural performance of sheet metal roof and siding systems by uniform static air pressure difference.

ASTM E-330 - Structural performance of exterior windows, doors, skylights, and curtain walls by uniform static air pressure difference.

ASTM E-2140 - Water penetration of metal roof panel systems by static water pressure head.

ASTM E-1646 - Water penetration of exterior metal roof panel systems by uniform static air pressure difference.

ASTM E-1680 - Rate of air leakage through exterior metal roof panel systems.

ASTM E-331 - Water penetration of exterior windows, skylights, doors, and curtain walls by uniform static air pressure difference.

ASTM E-283 - Rate of air leakage through exterior windows, curtain walls, and doors under specified pressure differences across the specimen.

FM 4471 - This standard states approval requirements for Class 1 panel roofs. A Class 1 panel roof meets the criteria of this standard for fire, wind, foot traffic, and hail damage resistance.

Florida Product Approval - Standard of practice for product evaluations and consistency of enforcement for the state of Florida.

Miami-Dade Approval - Established with its main goal to allow new and innovated ideas to be developed into useful, practical, lasting, and safe products for use in high velocity hurricane zones.

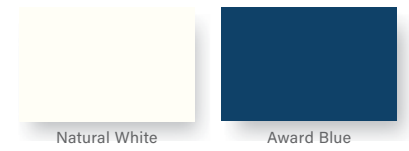
All information subject to change without notice. See website for details, specifications, and Watertightness Warranty requirements.

BERRIDGE MATERIALS & COATINGS

Berridge Standard Colors



Premium Colors*



Metallic Colors*

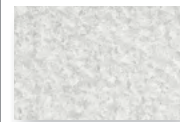


Please consult the Berridge Technical Department at technical@berridge.com for LEED and Energy Star compliance information. Due to limitations in the printing process, please request actual color chips for accurate color viewing. * Berridge premium and metallic colors require a nominal surcharge.

Berridge offers 24 Gauge and 22 Gauge Galvalume® steel and 0.032 and 0.040 aluminum in a wide-selection of Kynar 500® or Hylar 5000® PVDF resin-based coatings on the topside and a backer coating on the bottom. A protective, strippable film is applied to all prefinished material and must be removed prior to installation. Virtually unlimited custom colors are available with a minimum of 5,000 square feet order. Consult Berridge for pricing and availability.

All colors applied by Berridge are premium fluoropolymer coatings produced with full strength Kynar 500® or Hylar 5000® resin. Kynar 500® or Hylar 5000® affords maximum exterior durability due to its outstanding resistance to ultraviolet radiation. All colored finishes carry a 20-year warranty against cracking, peeling, and fading.

Natural Metal Finish



Acrylic-Coated Galvalume®

Berridge Acrylic-Coated Galvalume® is a coated sheet product that combines the corrosion resistance of Galvalume® steel sheet with a clear, organic resin applied to the top side and bottom side of Galvalume® substrate.

APPLICATIONS AND WARRANTIES

Finish Warranties

Berridge offers finish warranties for the Kynar 500® or Hylar 5000® PVDF resin-based coatings, which is applied on our continuous coil coating line. Warranties are issued upon submission and acceptance of a paint finish warranty application within one year of invoice date and payment in full of all material invoices.

Watertightness Warranties

Berridge offers watertightness warranties on approved Berridge roof assemblies upon submission and acceptance of a watertightness warranty application, approval of installer's roof installation details, inspection and approval of roof installation, and payment in full of all material invoices.

Product Applications

For design assistance and specific product application recommendations, please contact Berridge's Technical Department at (800) 231-8127 or visit www.Berridge.com for more information.

SEMINARS

AIA/CES Seminars

Berridge is registered with the AIA Continuing Education System and is committed to developing quality learning activities in accordance with the CES criteria. Please call Berridge's Architecture Department at (800) 669-0009 for more information about Berridge AIA/CES Seminars.

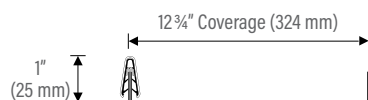
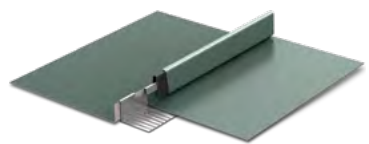
Installation Seminars

Berridge Metal Roofing Watertightness Warranty Training Seminars are one-day sessions conducted by the Watertightness Warranty Department at the Berridge Training Facility in San Antonio, Texas. The seminar consists of classroom instruction, installation demonstrations, roll former and seamer demonstrations, and a tour of the Berridge San Antonio paint line. The seminar provides in-depth coverage of material handling, underlayment systems, critical installation details for standing seam products and watertight warranty requirements.

STANDING SEAM ROOF SYSTEMS

TEE-PANEL

Straight, Curved and/or Tapered



24 Gauge Steel
Limited Availability: 22 Gauge Steel,
0.032 Aluminum

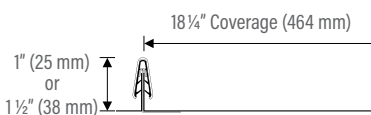
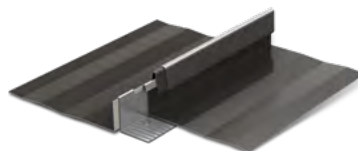
Specifications

Uses: Roof, Fascia*
Coverage: 12 3/4"
Finishes: Smooth
Fasteners: Concealed
Applications: Solid sheathing
Seam: 1" snap-on with
extruded vinyl weatherseal

* Fascia cannot be curved or tapered

HIGH SEAM TEE-PANEL

Straight, Curved and/or Tapered



24 and 22 Gauge Steel
0.032 Aluminum

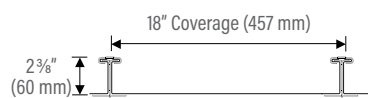
Specifications

Uses: Roof, Fascia*
Coverage: 18 1/4"
Finishes: Striated, optional smooth
Fasteners: Concealed
Applications: Solid sheathing
Seam: 1" or 1 1/2" snap-on with
extruded vinyl weatherseal

* Fascia cannot be curved or tapered

TEE-LOCK PANEL

Straight



24 and 22 Gauge Steel
0.032 and 0.040 Aluminum

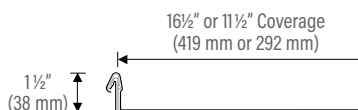
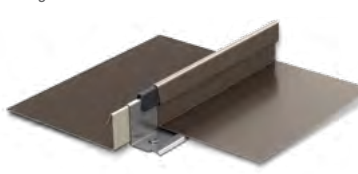
Specifications

Uses: Roofing, Fascia*
Coverage: 18"
Finishes: Striated, optional smooth
Fasteners: Concealed
Applications: Open framing, solid
sheathing
Seam: 2 3/8" standing mechanically
seamed sidelap
Optional: Extruded vinyl
weatherseal

* Requires flashing break from roof to fascia

CEE-LOCK PANEL

Straight



24 and 22 Gauge Steel
0.032 Aluminum

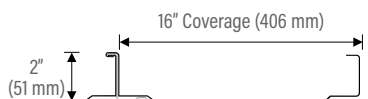
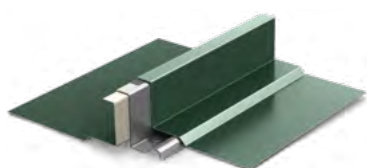
Specifications

Uses: Roof, Fascia
Coverage: 16 1/2" or 11 1/2"*
Finishes: Smooth, optional striations
Fasteners: Concealed
Applications: Solid sheathing
Seam: 1 1/2" snap-lock seam
Optional: Extruded vinyl weatherseal

* Contact BMC for material availability.
Not available with striations.

ZEE-LOCK PANEL

Straight, Curved or Tapered



24 and 22 Gauge Steel
0.032 and 0.040 Aluminum*

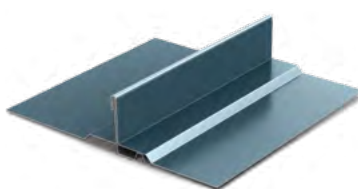
Specifications

Uses: Roof, Fascia*
Coverage: 16"
Finishes: Smooth, optional striations
Fasteners: Concealed
Applications: Open framing, solid
sheathing
Seam: 2" standing mechanically
seamed sidelap
Optional: Extruded vinyl weatherseal
on continuous rib, snap-on batten cap

* Fascia cannot be curved or tapered

DOUBLE-LOCK ZEE-LOCK PANEL

Straight



24 Gauge Steel
0.032 and 0.040 Aluminum

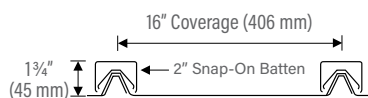
Specifications

Uses: Roof, Fascia
Coverage: 16"
Finishes: Smooth, optional striations
Fasteners: Concealed
Applications: Open framing,
solid sheathing
Seam: 2" 180° standing mechanically
seamed sidelap
Optional: Snap-on batten cap, extruded
vinyl weatherseal on continuous rib

* Requires flashing break from roof to fascia

ALTERNATIVE SYSTEMS

BATTEN SEAM PANEL

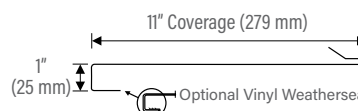


24 Gauge Steel

Specifications

Uses: Roof, Fascia
Coverage: 16"
Finishes: Smooth
Fasteners: Concealed
Applications: Open framing, solid
sheathing
Seam: 2" wide and 1 3/4" high
snap-on batten cap

BERMUDA ROOF PANEL



24 Gauge Steel

Specifications

Uses: Roof, Fascia, Mansard
Coverage: 11"
Finishes: Smooth, optional wood
grain texture
Fasteners: Concealed
Applications: Solid sheathing
Seam: 1" seam
Optional: Vinyl weatherseal

SIMULATED TILE ROOF SYSTEMS

SPANISH TILE

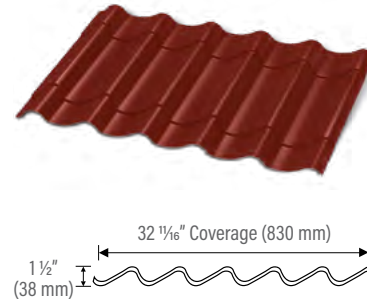


24 Gauge Steel

Specifications

Uses: Roof
Coverage: 8" wide x 16" tall
Finishes: Smooth
Fasteners: Concealed
Applications: Open framing, solid sheathing
Tiles: 8" wide and 2" tall
Optional: Custom mixed color palette

S-TILE



24 Gauge Steel

Specifications

Uses: Roof
Coverage: 32 1/16"
Finishes: Smooth
Fasteners: Exposed
Applications: Solid sheathing
Tiles: 14" step lengths and 1 1/2" tall

BERRIDGE METAL SHINGLES

FISH SCALE SHINGLES

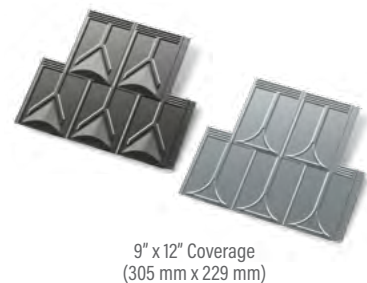


24 Gauge Steel

Specifications

Uses: Walls, Steep Mansards, Fascia
Coverage: 11 1/2" wide and 8 1/2" tall
Finishes: Lightly textured and scalloped
Fasteners: Concealed
Applications: Solid sheathing

CLASSIC & VICTORIAN SHINGLES



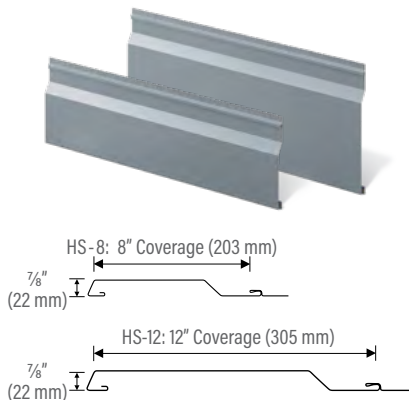
24 Gauge Steel

Specifications

Uses: Roof, Wall, Fascia
Coverage: 9" wide and 12" tall
Finishes: Victorian or Classic embossed pattern
Fasteners: Concealed
Applications: Solid sheathing

WALL, SOFFIT, CEILING, AND FASCIA PANEL SYSTEMS

HS-8 & HS-12 PANEL

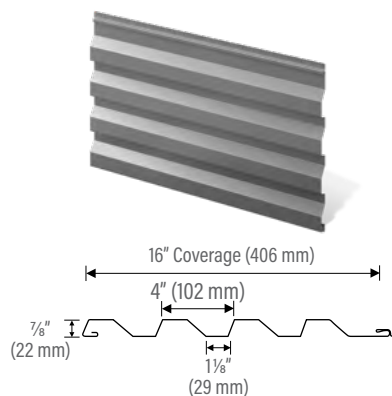


24 and 22 Gauge Steel
0.032 Aluminum

Specifications

Uses: Wall, Soffit, Ceiling, Fascia, Screen Wall, Berridge Fencing System
Coverage: HS-8: 8"; HS-12: 12"
Finishes: Standard stucco embossed, optional smooth (limited availability)
Fasteners: Concealed
Applications: Vertical on Fencing; horizontal or vertical over open framing or solid sheathing
Pattern: HS-8: 7/8" height and 5 5/8" rib with 2" reveal
HS-12: 7/8" height and 9 5/8" rib with 2" reveal

HR-16 PANEL

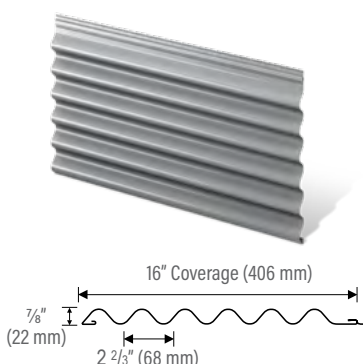


24 and 22 Gauge Steel
0.032 Aluminum

Specifications

Uses: Wall, Fascia, Screen Wall, Berridge Fencing System
Coverage: 16"
Finishes: Smooth
Fasteners: Concealed
Applications: Vertical on Fencing; horizontal or vertical over open framing or solid sheathing
Pattern: 7/8" height and 4" rib with 2" reveal

HC-16 PANEL

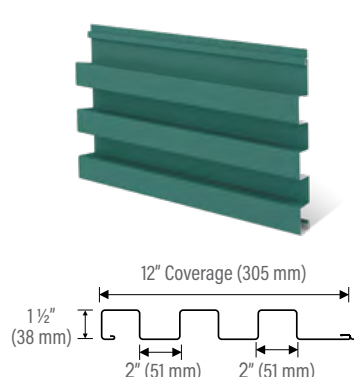


24 and 22 Gauge Steel
0.032 and 0.040 Aluminum

Specifications

Uses: Wall, Soffit, Ceiling, Fascia, Screen Wall, Berridge Fencing System
Coverage: 16"
Finishes: Smooth
Fasteners: Concealed
Applications: Vertical on Fencing; horizontal or vertical over open framing or solid sheathing

BR-12 PANEL



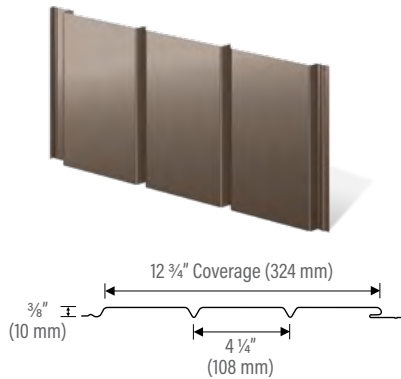
24 and 22 Gauge Steel
0.032 and 0.040 Aluminum

Specifications

Uses: Wall, Fascia, Screen Wall, Berridge Fencing System
Coverage: 12"
Finishes: Smooth
Fasteners: Concealed
Applications: Vertical on fencing; horizontal or vertical over open framing or solid sheathing
Pattern: 1 1/2" height and 2" rib with 2" reveal

All information subject to change without notice. See website for details, specifications, and Watertightness Warranty requirements.

VEE-PANEL

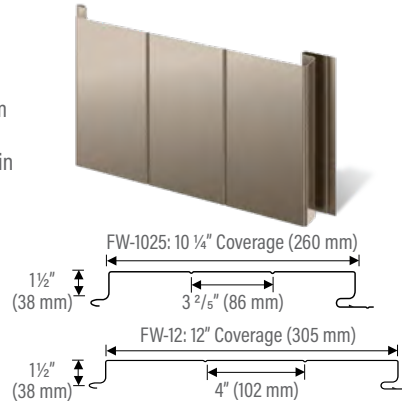


24 and 22 Gauge Steel

Specifications

Uses: Wall, Soffit, Ceiling, Fascia, Screen Wall, Berridge Fencing System
Coverage: 12 3/4"
Finishes: Smooth, optional wood grain
Fasteners: Concealed
Applications: Vertical over open framing or solid sheathing
Pattern: 4 1/4" between grooves, optional venting

FW-12 & FW-1025 PANEL

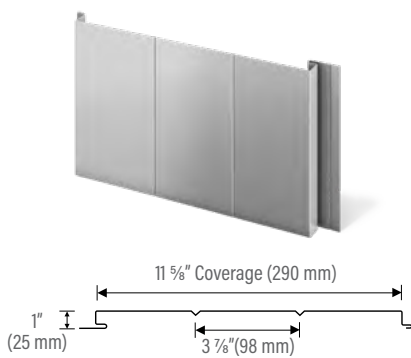


24 and 22 Gauge Steel
0.032 and 0.040 Aluminum

Specifications

Uses: Wall, Soffit, Ceiling, Fascia, Screen Wall
Coverage: FW-1025: 10 1/4"; FW-12: 12"
Finishes: Smooth, optional stucco embossed
Fasteners: Concealed
Applications: Vertical over open framing or solid sheathing
Pattern: Optional vee-grooves, striations or venting
Optional: Seam lock feature

L-PANEL

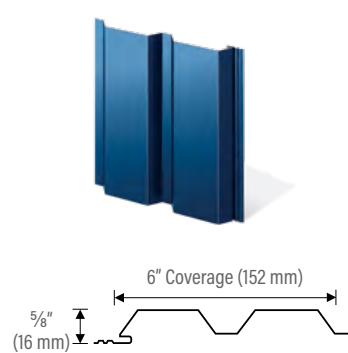


24 and 22 Gauge Steel
0.032 Aluminum

Specifications

Uses: Soffit, Ceiling, Fascia, Screen Wall
Coverage: 11 5/8"
Finishes: Smooth, optional stucco embossed
Fasteners: Concealed
Applications: Vertical over open framing or solid sheathing
Pattern: Optional vee-grooves and venting

B-6 PANEL

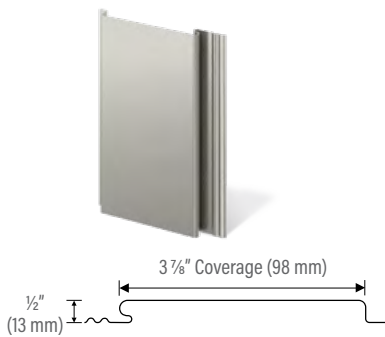


24 Gauge Steel

Specifications

Uses: Wall, Soffit, Ceiling, Fascia, Screen Wall, Berridge Fencing System
Coverage: 6"
Finishes: Smooth
Fasteners: Concealed
Applications: Vertical over open framing or solid sheathing
Pattern: Extruded vee-grooves

FLUSH SEAM PANEL

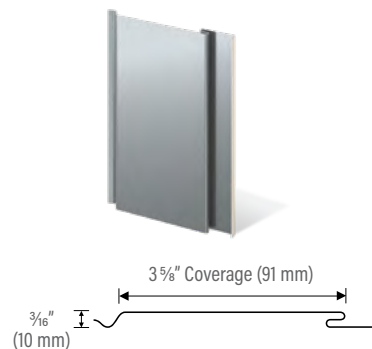


24 Gauge Steel

Specifications

Uses: Wall, Soffit, Ceiling, Fascia, Screen Wall, Berridge Fencing System
Coverage: 3 7/8"
Finishes: Stucco embossed, optional wood grain
Fasteners: Concealed
Applications: Vertical over open framing or solid sheathing

THIN-LINE PANEL



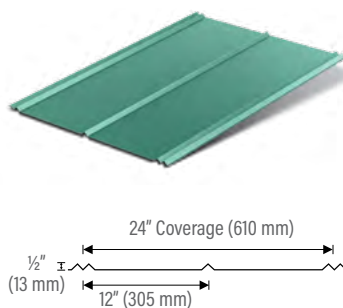
24 Gauge Steel

Specifications

Uses: Wall, Soffit, Ceiling, Fascia, Screen Wall, Berridge Fencing System
Coverage: 3 5/8"
Finishes: Smooth, optional wood grain or stucco embossed
Fasteners: Concealed
Applications: Vertical over open framing or solid sheathing

EXPOSED FASTENERS

DOUBLE-RIB PANEL

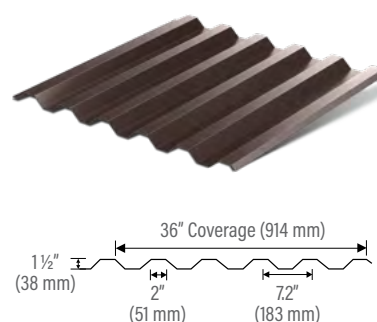


24 Gauge Steel

Specifications

Uses: Roof
Coverage: 24"
Finishes: Smooth
Fasteners: Exposed
Applications: Solid sheathing

DEEP-DECK PANEL



24 and 22 Gauge Steel
0.032 and 0.040 Aluminum

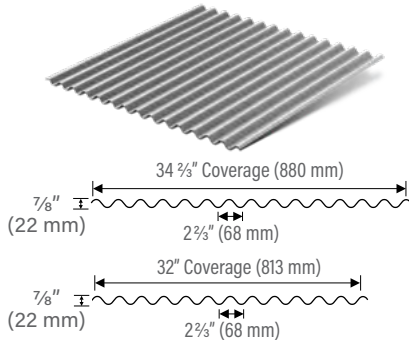
Specifications

Uses: Roof, Wall, Soffit, Ceiling, Fascia, Sheathing, Screen Wall
Coverage: 36"
Finishes: Smooth
Fasteners: Exposed
Applications: Vertical or horizontal* over open framing or solid sheathing

* Horizontal on wall applications only

S-DECK PANEL

Straight and Curved (limited)



24 and 22 Gauge Steel
0.032 and 0.040 Aluminum

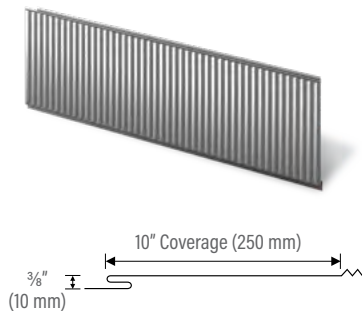
Specifications

Uses: Roof, Wall, Soffit, Ceiling, Fascia, Sheathing, Screen Wall
Coverage: 32" and 34 2/3"
Finishes: Smooth
Fasteners: Exposed
Applications: Vertical or horizontal* over open framing or solid sheathing
Optional: Factory curved for limited applications

* Horizontal on wall applications only

SPECIALTY APPLICATION SYSTEM

FLUTED FASCIA PANEL

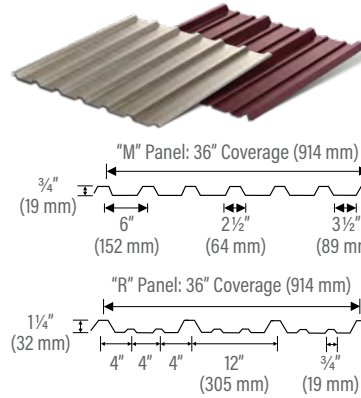


24 Gauge Steel

Specifications

Uses: Walls, Fascia, Steep Mansards
Coverage: 34 1/2" wide and 10" tall
Finishes: Fluted
Fasteners: Concealed
Applications: Horizontal over solid wood sheathing

"M" & "R" PANEL



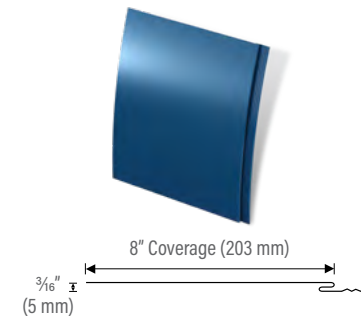
24 and 22 Gauge Steel
0.032 Aluminum

Specifications

Uses: Roof, Wall, Soffit, Ceiling, Fascia, Mansard, Sheathing, Screen wall
Coverage: 36"
Finishes: Smooth
Fasteners: Exposed
Applications: Vertical or horizontal* over open framing or solid sheathing

* Horizontal on wall applications only

CURVED FLAT SEAM PANEL



24 Gauge Steel

Specifications

Uses: Fascia
Coverage: 8"
Finishes: Smooth
Fasteners: Concealed
Applications: Curved over solid sheathing

ARCHITECTURAL PRIVACY FENCE



24 Gauge Steel Spaceframe
Components
16 Gauge Galvanized Steel Posts

Specifications

Fence Heights: 4' 2", 6' 2", 8' 2" and 10' 2"
Panel Widths: Vary by panel choice.
Available in nine Berridge 24 gauge panels: HS-8 and HS-12 Panels, HR-16 Panel, HC-16 Panel, BR-12 Panel, B-6 Panel, Vee-Panel, Flush Seam Panel, or Thin Line Panel
Finishes: Vary by panel choice
Fasteners: Interlock with concealed fasteners

SPACEFRAME

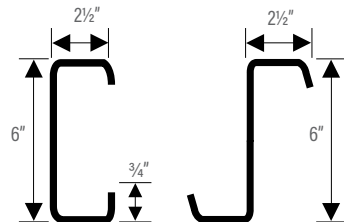


24 and 16 Gauge Steel

Specifications

Uses: Framing of light-commercial and residential projects

LIGHT GAUGE FRAME



24 and 16 GA Steel

Specifications

Framing members: hat, purlin, channels, cee, zee

COIL & FLAT SHEETS



Berridge owns and operates its own continuous coil-coating paint line to provide fast, responsive service for coil and flat sheets. A wide array of long-life Kynar 500® or Hylar 5000® PVDF resin-based coatings are available pre-slit for portable roll forming or in flat sheet form for custom trim and flashing fabrication. Branch locations have a large inventory of 24 gauge painted flat sheets in all our standard colors and slit coil in popular widths and colors for immediate pick up.

CORPORATE HEADQUARTERS

2610 Harry Wurzbach Road
San Antonio, TX 78209
(210) 650-3050
(210) 650-0379 fax

CORPORATE PRODUCTION FACILITY

2201 Rudeloff Road
Seguin, TX 78155
(830) 401-5200
(830) 303-0530 fax

CORPORATE TECHNICAL OFFICE

1720 Maury Street
Houston, TX 77026
(713) 223-4971
(713) 236-9422 fax
technical@berridge.com

Technical or Sales Assistance:
(800) 669-0009

Follow us on:



www.Berridge.com

BRANCH OFFICES

BMC SAN ANTONIO

6515 Fratt Road
San Antonio, TX 78218
(210) 650-3050
(210) 650-0379 fax

BMC DALLAS

2015 California Crossing
Dallas, TX 75220
(972) 506-8496
(972) 506-8478 fax

BMC DENVER

7505 E. 41st Avenue
Denver, CO 80216
(303) 322-3703
(303) 322-3810 fax

BMC ATLANTA

319 Lee Industrial Boulevard
Austell, GA 30168
(770) 941-5141
(770) 941-7344 fax

BMC PHOENIX

5717 W. Washington Street
Phoenix, AZ 85043
(602) 385-1237
(210) 650-0379 fax

BERRIDGE FLORIDA SALES CORPORATION*

8802 Venture Cove
Tampa, FL 33637
(813) 335-4505
(210) 650-3079 fax

BMC HOUSTON

1720 Maury Street
Houston, TX 77026
(713) 223-4971
(713) 236-9422 fax

BMC OKLAHOMA CITY

1400 Exchange Avenue
Oklahoma City, OK 73108
(405) 248-7404
(210) 650-0379 fax

BMC CHICAGO

1175 Carolina Drive
West Chicago, IL 60185
(630) 231-7495
(630) 231-7520 fax

BMC KANSAS CITY

1235 Southwest Boulevard
Kansas City, KS 66103
(913) 227-0855
(210) 650-0379 fax

BERRIDGE CALIFORNIA SALES CORPORATION*

8442 Sultana Avenue
Fontana, CA 92335
(562) 402-2081
(562) 865-7878 fax

* Berridge California and Florida Sales
Corporations are separate entities from
Berridge Manufacturing Company.



Berridge Manufacturing Company is registered with the AIA Continuing Education System (AIA/CES) and is committed to developing quality learning activities in accordance with the CES criteria. Please call Berridge's Staff Architect at (800) 669-0009 to schedule a seminar.

